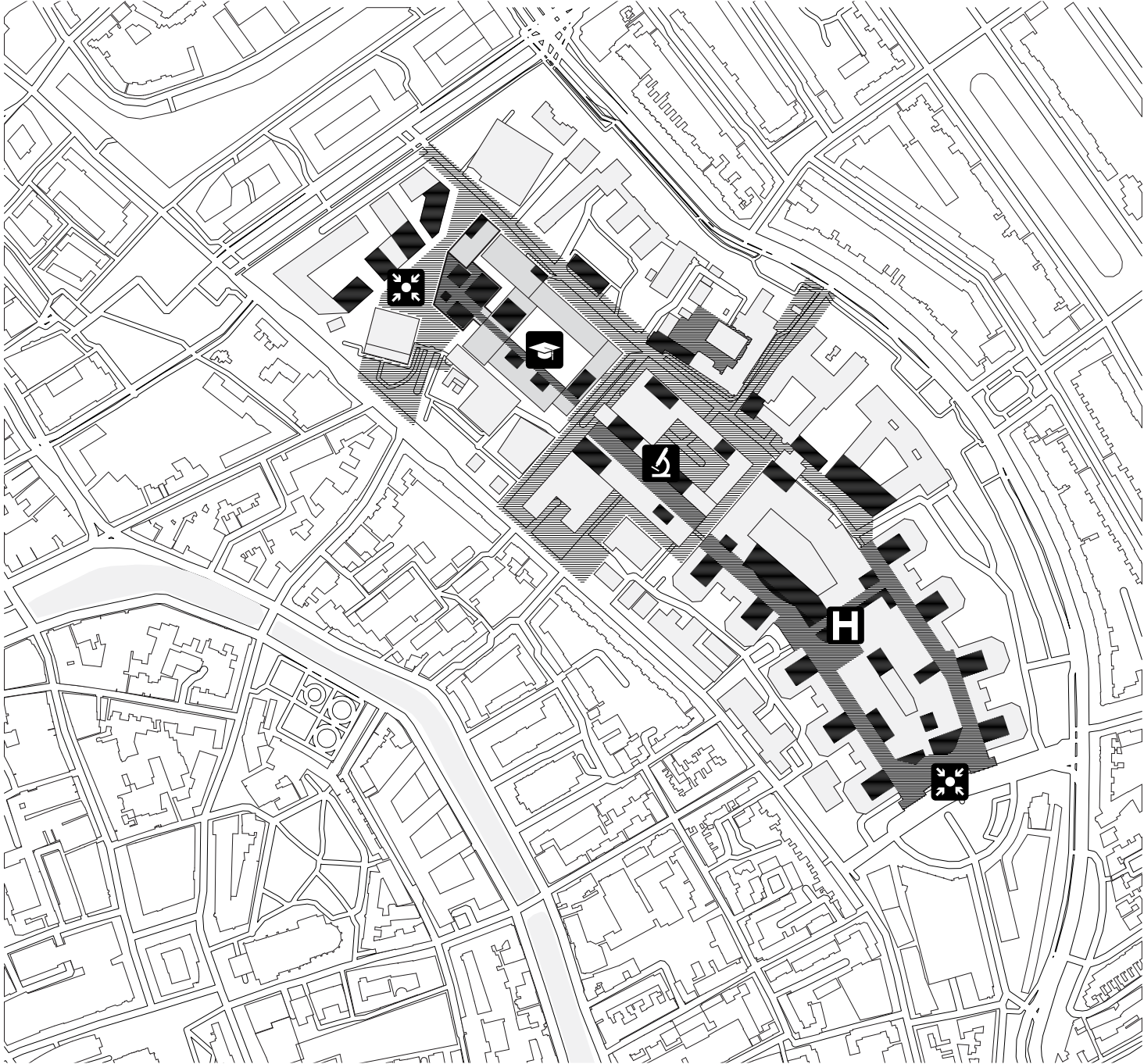


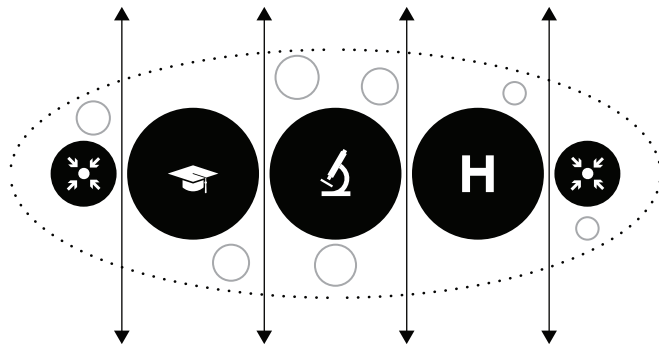
CAMPUS RELATION WITH CITY CENTER



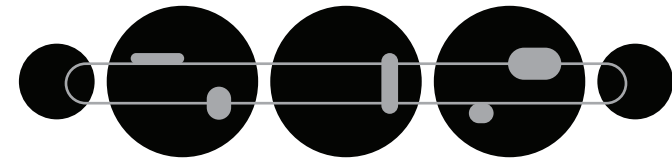
public routes

activities

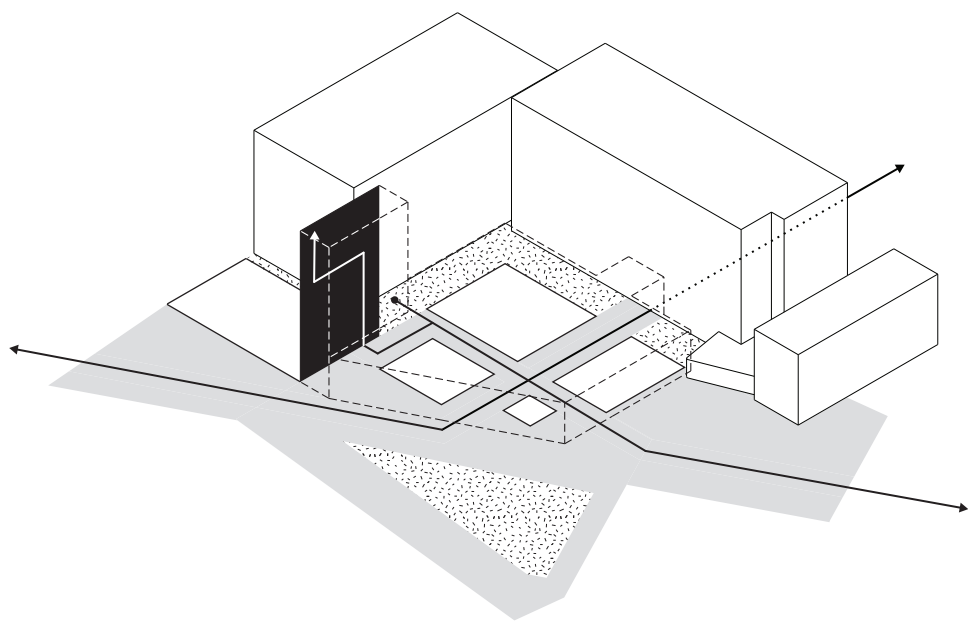




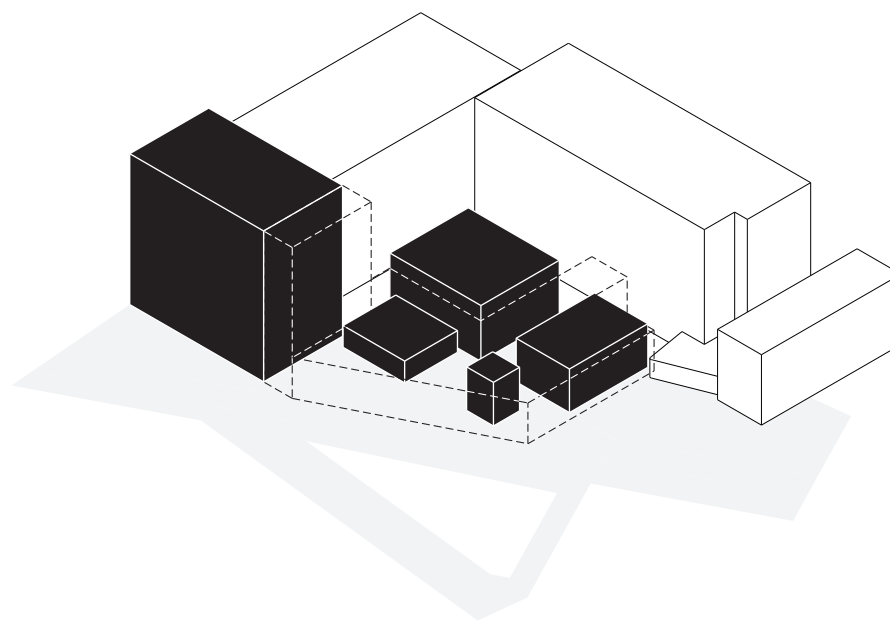
Implementing porous edges and passages strengthens the campus typology and its connection with the city



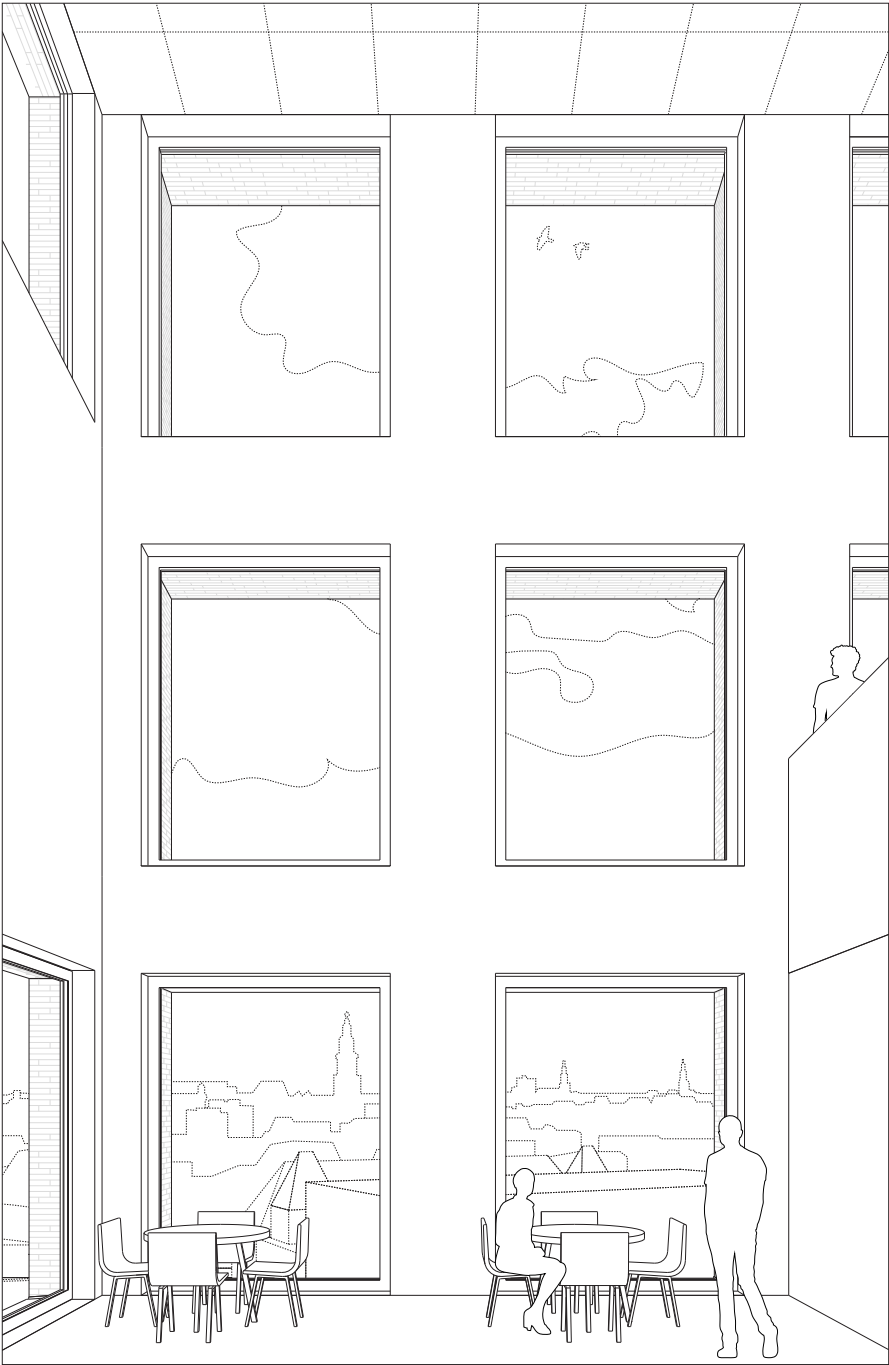
Implementing the circulation 'Inner Ring' and ground-level programming creates synergy between campus functions



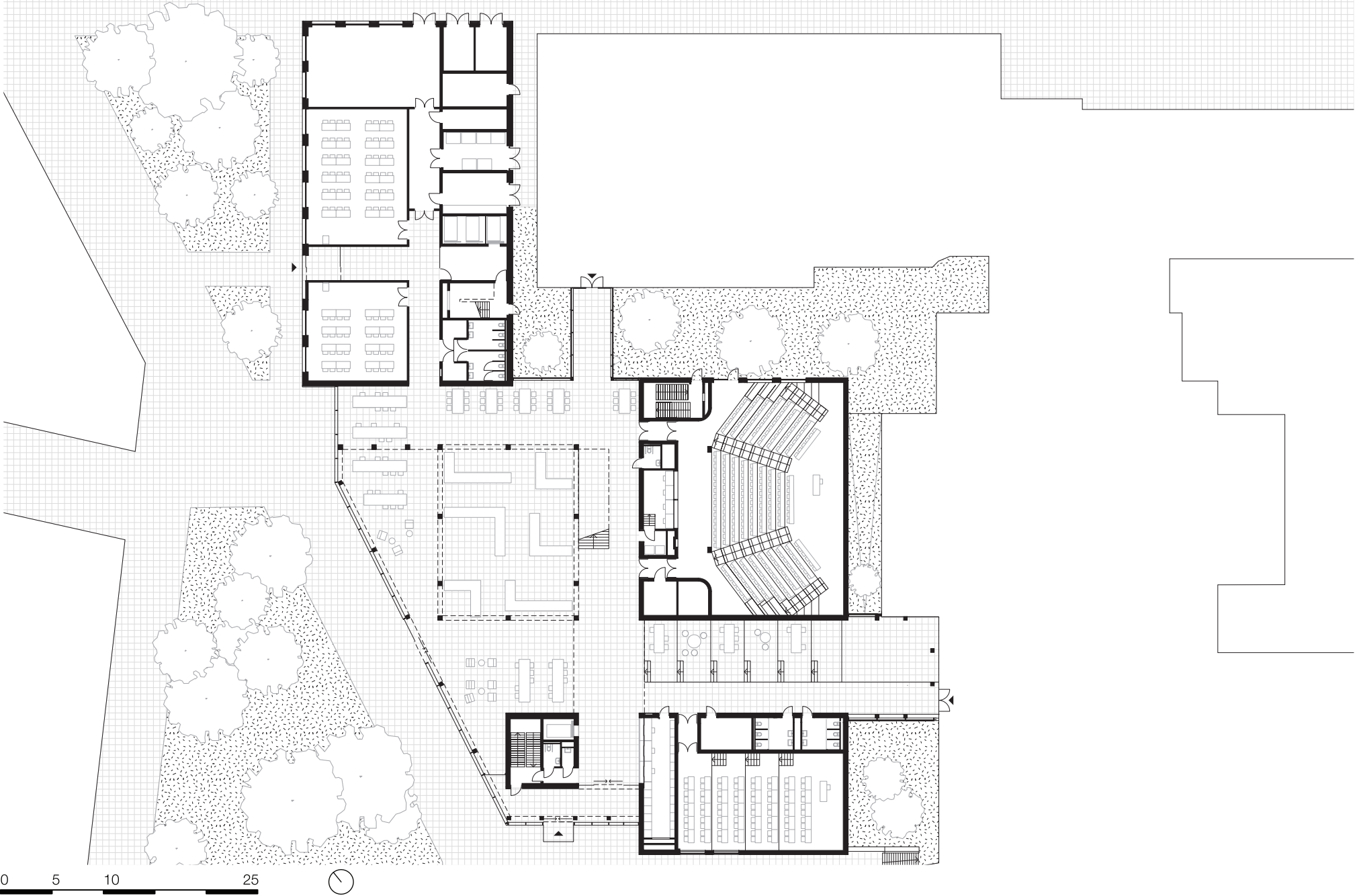
3D public routes

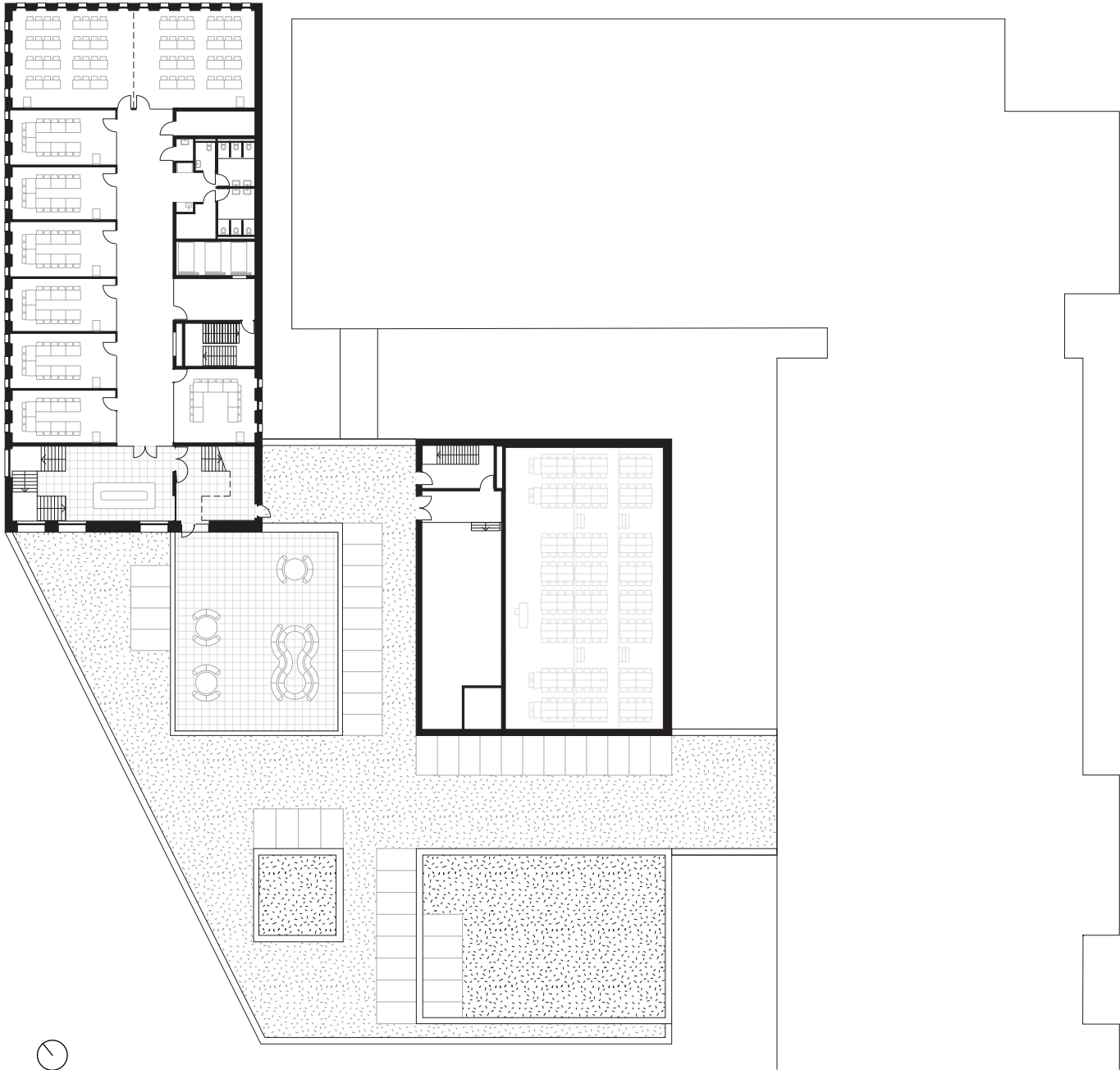


functional volumes



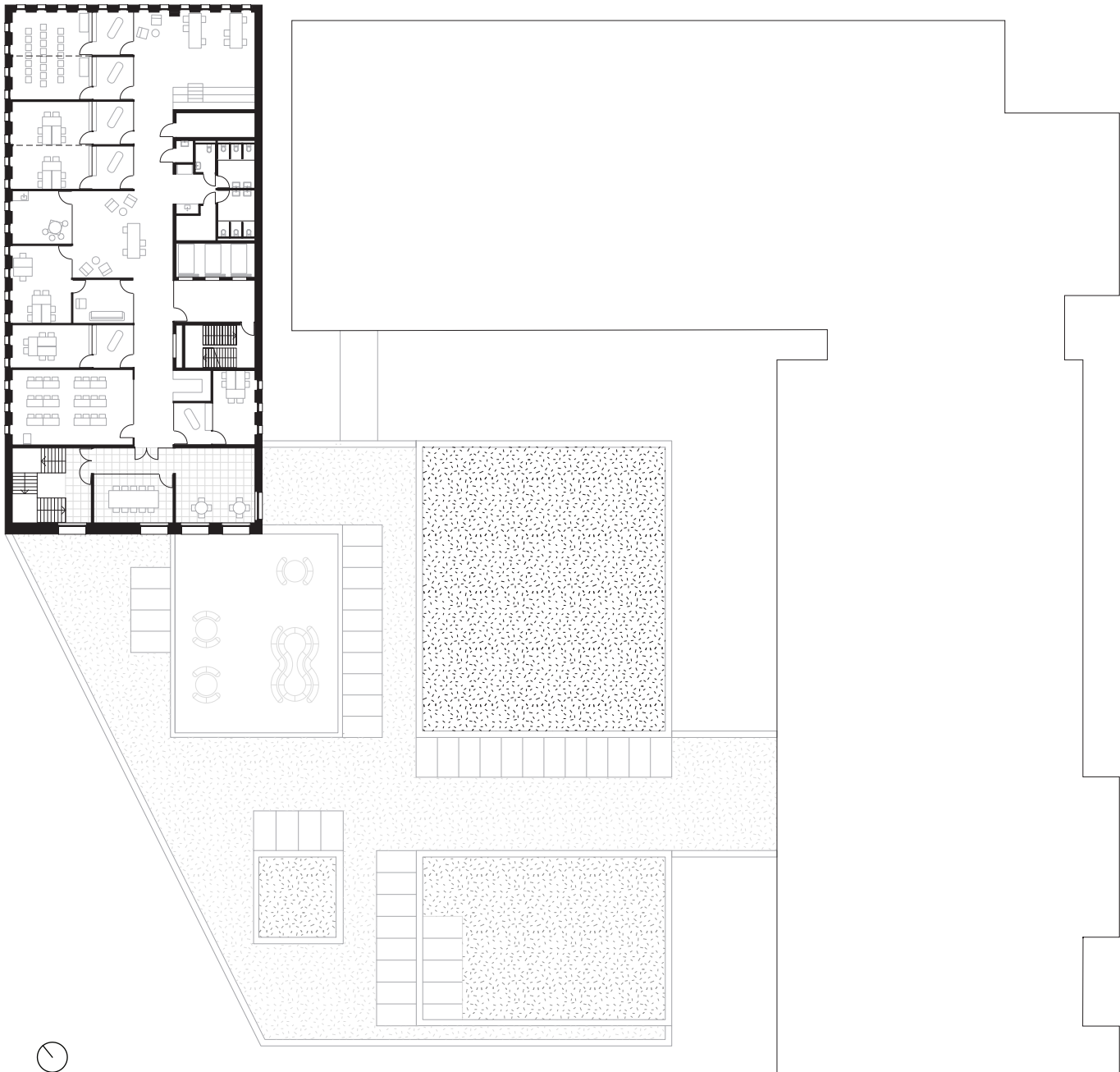
LEVEL 0



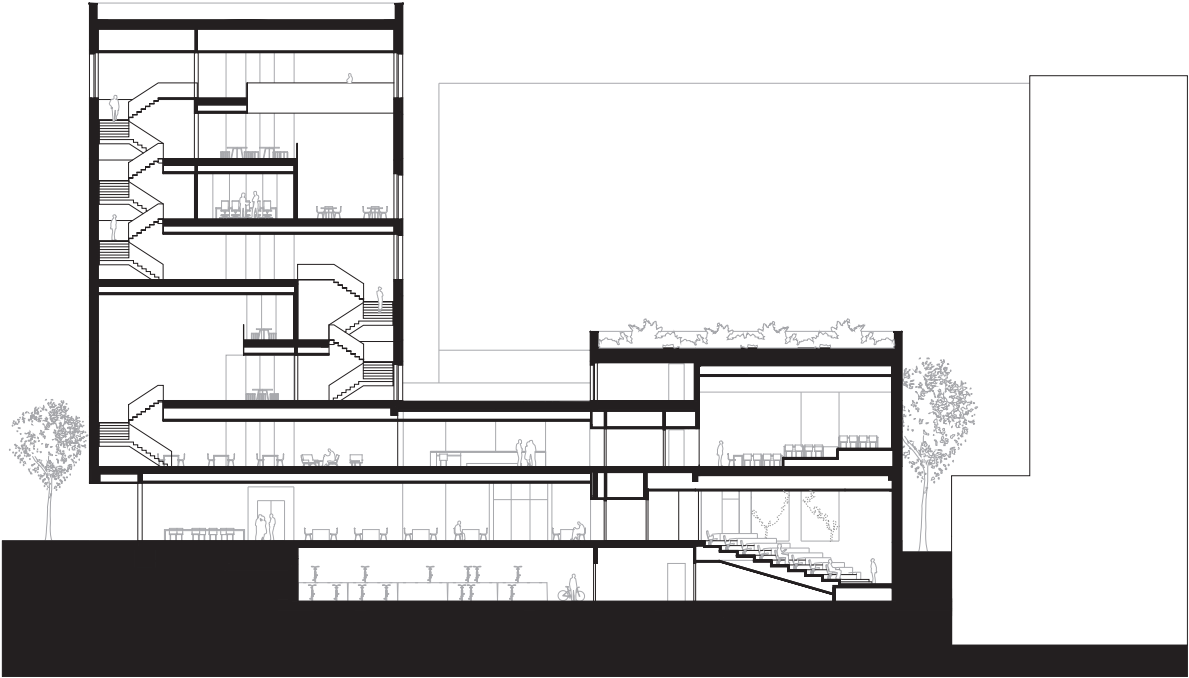




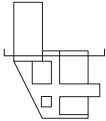




SECTION AA



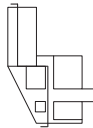
0 5 10 25



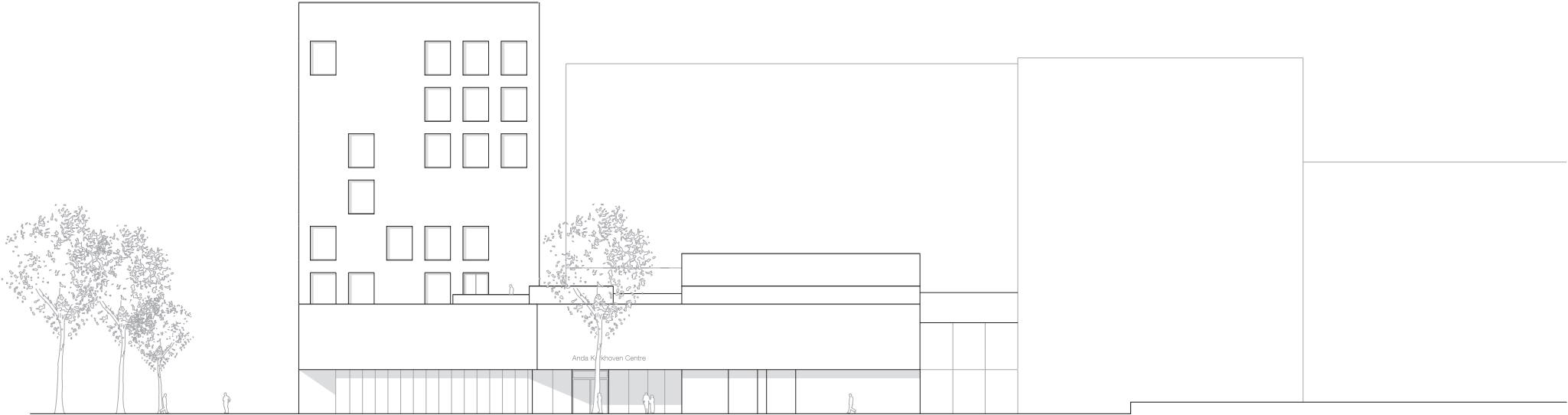
SECTION BB



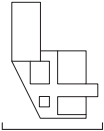
0 5 10 25



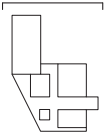
SOUTH-WEST FACADE



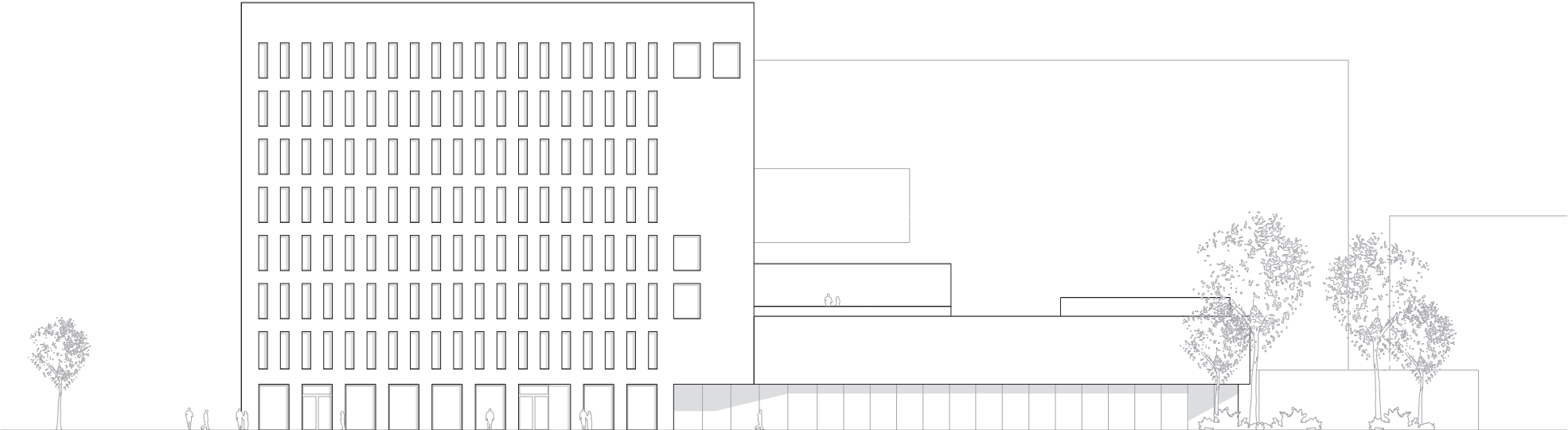
0 5 10 25



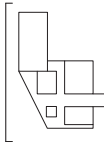
NORTH-EAST FACADE



NORTH-WEST FACADE



0 5 10 25



FACADE DETAILS

